

Emigre Fonts

Thank you for your font purchase!

To protect your investment, please make sure your registration is complete.

Registration

Registered owners receive free technical support for 60 days. You are automatically registered when purchasing fonts directly from Emigre. When purchasing from a dealer, send us the registration form within 30 days of purchase, or register your Emigre fonts online at: <http://www.emigre.com/fontreg>

Please inform us if you have a change of address so that we may keep you current on any upgrades. Technical support line: (916) 451-4344.

Font Installation

Before installation, it is best to lock master disks to ensure their safety. Never attempt to alter the names of any font files. If you have a font management utility installed, please refer to its user's guide to determine if the instructions given here apply.

Macintosh PostScript, Macintosh TrueType and Windows formats are sold separately.

Click on a section below:

[**Emigre Fonts User License**](#)

[**Installation Instructions**](#)

[**Character Set and Key Map**](#)

Contact:

Emigre, Inc., 4475 "D" Street, Sacramento, California 95819 USA (916) 451-4344 fax (916) 451-4351

email: sales@emigre.com

Emigre Online: <http://www.emigre.com>

Font registration: <http://www.emigre.com/fontreg>

Copyright © 1990, 1998, Emigre Graphics. Emigre Fonts is a trademark of Emigre Graphics. Apple, Macintosh, LaserWriter, and Finder are trademarks of Apple Computer, Inc. PostScript is a trademark of Adobe Systems Incorporated. Windows is a trademark of Microsoft.

Emigre Fonts User License

You agree to the following user licensing terms:

1. This Emigre Fonts package is licensed for use on a single printer or output device in conjunction with a maximum of 5 CPUs or workstations.
2. A multi-device site license upgrade must be purchased for multiple device use according to the multi-device license schedule shown below. Each location and/or entity must purchase a separate license, starting with the first device. An output device is any printer, such as a Linotronic rasterizer, laser printer, or dot-matrix printer, any video display terminal or any other device where display is generated from the font software outlines, such as with the use of Adobe Type Manager, if the font is to be used primarily for display terminals that generate the output, as in a multimedia CD.
3. The contents of this Emigre Fonts package may not be copied or duplicated in any form except for backup purposes. Emigre Fonts software or documentation may not be rented, leased, sublicensed or lent to another person or entity.
4. Packages may not be returned or exchanged unless defective. Defective packages shall be replaced by the same package if accompanied with purchase receipt and Emigre is notified within one week of purchase.
5. Any software, EPS file, illustration, or anything derived from Emigre Fonts software must be used according to the original licensing terms. This means, for example, that any modified Emigre Font, or any outline information derived from any Emigre Font is still licensed for the same number of devices as the original and may not be sublicensed, given away, or sold without written permission from Emigre, Inc. Emigre is responsible for technical support of its officially distributed fonts only. Emigre is not responsible for modified and / or regenerated software. This license does not permit any form of embedding or encrypting of Emigre Fonts in digital documents or any other form. If embedding of Emigre Fonts is desired, the user must purchase an additional license from Emigre based upon usage. If an embedding license is desired, the licensee must represent and warrant that licensee's encryption of the embedded Emigre's Fonts is secure enough to prevent any access or use by anyone.
6. The user of this Emigre Fonts software agrees to credit Emigre as the trademark and copyright owner of the Emigre Fonts and list the font names, wherever and whenever design, production, or any other credits are shown.
7. Any violation by you of this agreement shall cause this license to be terminated. In the event of termination, and without limiting any other remedies which may be available against you, you must immediately return the font package to Emigre and certify that no copy remains in your, or anyone else's possession.
8. Emigre makes no warranties express or implied as to merchantability, fitness for a particular purpose, or otherwise. Without limiting the forgoing, Emigre shall in no event be liable for any direct, indirect, consequential, or incidental damages, including damages from loss of business profits, business interruption, loss of business information, arising out of the use or inability to use the product.

Multi-device Upgrades

Multi-device site license upgrades are priced according to the schedule shown below. Each location and/or entity must purchase a separate license, starting with the first device. The following is cumulative:

2nd printer with up to 10 CPUs: add 50 percent of original price.

3rd to 10th printer with 11 to 50 CPUs: add 20 percent for each printer or per5 CPUs.

11th to 25th printer with 51 to 125 CPUs: add 15 percent for each printer or per5 CPUs.

26th to 50th printer with 126 to 250 CPUs: add 10 percent for each printer or per5 CPUs.

51st printer and over with 251 CPUs and over: add 5 percent for each printer or per5 CPUs.

If your usage exceeds the number of CPUs for a given output device category, you must purchase the upgrade with the applicable number of CPUs.

Each location and/or entity must purchase a separate license, starting with the first device. The upgrade price is calculated as a percentage of the original price of the package.

To help keep your font licensing current, we've provided a convenient form at: <http://www.emigre.com FontAudit.html>

Click on a section below:

[Registration](#)

[Installation Instructions](#)

[Character Set and Key Map](#)

Installation Instructions

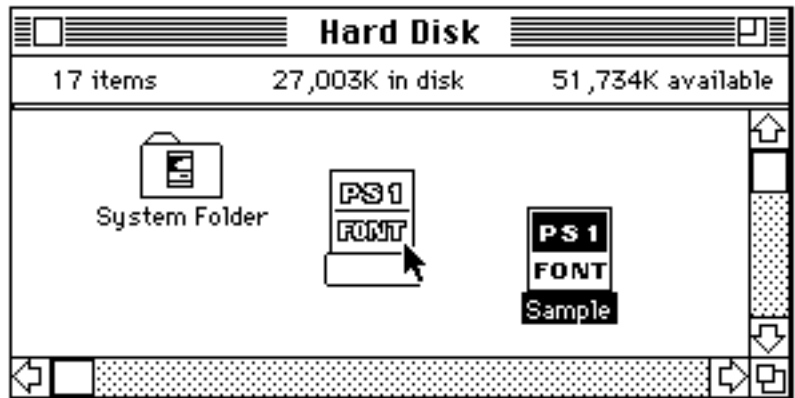
Extracting: Before installing, you will need to extract (or uncompress) any files with the “.sea” suffix.

File names ending with “.sea” indicate files which are provided in a self-extracting archive format. To begin self-extraction, simply “open” or double-click the file’s icon. A dialog box will appear asking you where you would like the uncompressed file(s). Select “Drive” and navigate to the appropriate folder or location; then click on the “Extract” button.

Macintosh PostScript Type 1 installation: Drag the icons onto the System Folder.

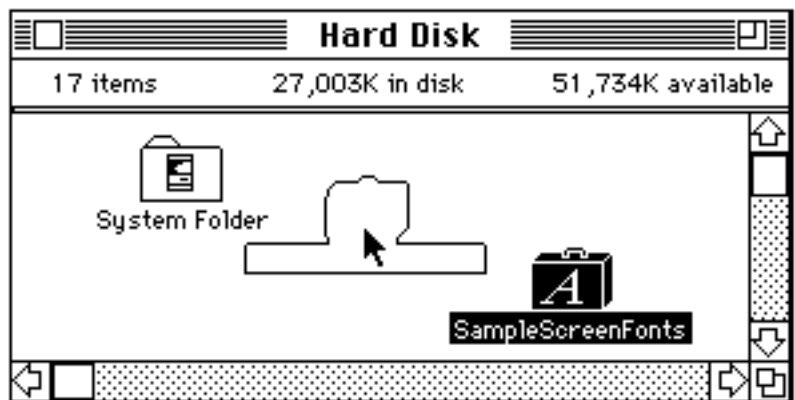


PostScript Fonts: PostScript Type 1 outline fonts are used for printing and for screen display with Adobe Type Manager (ATM). To install PostScript Type 1 fonts, select and drag both the PostScript and ScreenFont icons directly onto the System Folder; not the System file. (The Macintosh will tell you that it is going to put these files in their proper places.) In order to use the PostScript fonts, you must also install the corresponding screen fonts.



Screen Fonts: Also called bitmap fonts, screen fonts are used for screen display and dot-matrix printing. Drag the screen fonts icon directly onto the System Folder.

AFM Files: Some PostScript font packages also include AFM files which contain font metrics and kerning information. AFM files are generally not necessary for Macintosh font operation; consult your application manual for installation instructions.



Macintosh TrueType and Screen Fonts installation:

Drag the icons onto the System Folder.

(This installation is used for both screen fonts, as well as for TrueType fonts.)



TrueType Fonts: This is Apple’s outline font technology which was introduced with System 7. TrueType outline fonts are used for both screen display and printer output. Install the TrueType fonts by dragging the suitcase icon directly onto the System Folder; not the System file. (The Macintosh will tell you that it is going to put these files in their proper places.) Each Emigre TrueType suitcase contains both screen fonts and TrueType outline fonts, so installation is accomplished in one step.

Click on a section below:

[Registration](#)

[Emigre Fonts User License](#)

[Character Set and Key Map](#)

Standard Character Set

This key map applies to Emigre's standard character set for text faces; some display fonts may have more limited character sets. If this font package includes special characters, illustrations, or small caps and fractions, please see the special characters on the following page.

Please note that this character set is provided under the Macintosh operating system; some characters may not be available with other systems, such as Windows.

Composite Characters

option - e	+	a	=	á
option - e	+	e	=	é
option - e	+	i	=	í
option - e	+	o	=	ó
option - e	+	u	=	ú
option - e	+	E	=	É
option - i	+	a	=	â
option - i	+	e	=	ê
option - i	+	i	=	î
option - i	+	o	=	ô
option - i	+	u	=	û
option - n	+	a	=	ã
option - n	+	n	=	ñ
option - n	+	o	=	õ
option - n	+	A	=	Ã
option - n	+	N	=	Ñ
option - n	+	O	=	Õ
option - u	+	a	=	ä
option - u	+	e	=	ë
option - u	+	i	=	ï
option - u	+	o	=	ö
option - u	+	u	=	ü
option - u	+	y	=	ÿ
option - u	+	A	=	Ä
option - u	+	O	=	Ö
option - u	+	U	=	Ü
option - `	+	a	=	à
option - `	+	e	=	è
option - `	+	i	=	ì
option - `	+	o	=	ò
option - `	+	u	=	ù
option - `	+	A	=	À

Some Emigre fonts include both lining and old style figures in one font; the alternate numerals are accessed as follows.

Alternate Numerals:

option-shift-1	1	1	!	¡	ALT 1
option-shift-2	2	2	@	™	ALT 2
option-shift-3	3	3	#	£	ALT 3
option-shift-4	4	4	\$	¢	ALT 4
option-5	5	5	%		ALT 5
option-6	6	6			ALT 6
option-shift-7	7	7	&	¶	ALT 7
option-shift-8	8	8	*	•	ALT 8
option-shift-9	9	9	(ALT 9
option-shift-0	0	0)		ALT 0

For design information about lining and old style figures, see: www.emigre.com/EFoGC.html

Note: if you have trouble printing these characters, make sure symbol font substitution is turned off in your application.

NB space (non-breaking space):

This character is equal in width to the regular space, but will not break words to a separate line.

KEY	CHAR	SHIFT	OPT.	OP-SH
A	a	A	å	Å
B	b	B		ı
C	c	C	ç	Ç
D	d	D		Î
E	e	E	´	´
F	f	F	f	ÿ
G	g	G	©	˘
H	h	H	·	Ó
I	i	I		ˆ
J	j	J		Ô
K	k	K	°	
L	l	L		Ò
M	m	M	µ	Â
N	n	N		˜
O	o	O	ø	Ø
P	p	P		
Q	q	Q	œ	Œ
R	r	R	®	‰
S	s	S	ß	Í
T	t	T	†	˘
U	u	U	”	”
V	v	V		
W	w	W		”
X	x	X		
Y	y	Y	¥	Á
Z	z	Z		
1	1	!	¡	ALT 1
2	2	@	™	ALT 2
3	3	#	£	ALT 3
4	4	\$	¢	ALT 4
5	5	%		ALT 5
6	6			ALT 6
7	7	&	¶	ALT 7
8	8	*	•	ALT 8
9	9	(ALT 9
0	0)		ALT 0
,	,	<		
-	-	—		
[[{	“	”
]]	}	’	,
;	;	:	…	Ú
'	'	"	æ	Æ
,	,	<		˘
.	.	>		˘
/	/	?		¿
SPACE BAR			NB SPACE	

Click on a section below:

- [Registration](#)
- [Emigre Fonts User License](#)
- [Installation Instructions](#)
- [Special Characters](#)

Special Characters Base 9/12

This key map applies to font specific special characters. For information about Emigre's standard character set, see the previous page.

Please note that this character set is provided under the Macintosh operating system; some characters may not be available with other systems, such as Windows.

Base-12 Sans

8 sans-serif faces including small caps. BaseTwelve Sans comes with lining tabular numerals and small caps lining tabular numerals.

Base-12 Serif

8 serif faces including small caps. BaseTwelve Serif comes with oldstyle tabular numerals and small caps lining tabular numerals.

Base-9

8 faces including small caps. BaseNine comes with lining tabular numerals and small caps lining tabular numerals.

Tabular Numerals

Tabular numerals, also called "mono spaced" numerals, have proportional character spacing and are ideal for use in annual report columns and other tabular applications. (Tabular numerals may be either old style or lining.)

Old Style Numerals

Old style numerals, also called "non-lining," have ascenders and descenders like the lowercase letters, with emphasis along the x-height, thus creating a more even appearance than lining numerals when used within lowercase text.

Lining Numerals

Lining numerals are all aligned with the height of the capital letters.

Small Caps Lining Numerals

Small caps lining numerals are all aligned with the height of the small caps.

Small Caps

Small caps are capital letter forms that are shorter than the regular capitals, and are designed to be visually compatible with the standard caps. You might ask why we bother making separate small caps fonts. Although many layout programs can mechanically generate small caps by scaling the standard caps, small caps generated in this way appear too light next to the standard caps because the stem weights of these characters are also reduced by the scaling. Therefore, to achieve small caps that are visually compatible with the standard caps, they must be optically corrected.

For design information about small caps, lining figures and old style figures, see:
www.emigre.com/EFoGC.html

Click on a section below:

[Registration](#)

[Emigre Fonts User License](#)

[Installation Instructions](#)

[Standard Character Set](#)